

KEY TO INSIDE PHOTOS

1. COBBLESTONE Running Bond, LITHOCHROME Color Hardener A-27 Dark Red, LITHOCHROME Antiquing Release 1290 Cordovan Brown. 2. FRACTURED SLATE Embossing Skin, LITHOCHROME Color Hardener A-50 Slate Gray, LITHOCHROME Antiquing Release 5183 Stone Gray. 3. CANYON STONE Random Interlocking ABC, LITHOCHROME Color Hardener A-59 Beige Cream, LITHOCHROME Antiquing Release 5921 Walnut. 4. NEW BRICK Running Bond, LITHOCHROME Color Hardener A-26 Brick Red, LITHOCHROME Antiquing Release A-50 Slate Gray. 5. WEATHERED WOOD Interlocking Plank, LITHOCHROME Color Hardener A-55 Pecan Tan, LITHOCHROME Antiquing Release 1290 Cordovan Brown. 6. CLAY TILE Stacked Bond, LITHOCHROME Color Hardener A-29 Terra Cotta, LITHOCHROME Antiquing Release 4388 Russet. 7. FRACTURED SLATE Rattanweave, LITHOCHROME Color Hardener 5758 Weathered Sage, LITHOCHROME Antiquing Release A-50 Slate Gray. 8. USED BRICK Running Bond, LITHOCHROME Color Hardener 0266 Ash White, LITHOCHROME Antiquing Release 2959 Mesa Beige, LITHOCHROME Chemstain Classic CS-2 Padre Brown accents. 9. PENNSYLVANIA SLATE Single Stone, LITHOCHROME Color Hardener A-53 Arizona Tan, A-24 Russet & A-29 Terra Cotta, LITHOTEX Liquid Release. 10. STONE TILE Stacked Bond, LITHOCHROME Color Hardener A-28 Tile Red LITHOCHROME Antiquing Release 1101 Classic Gray. 11. OLD BELGIUM STONE Running Bond, LITHOCHROME Color Hardener A-24 Russet, LITHOCHROME Antiquing Release 1101 Classic Gray. 12. USED BRICK Herringbone, LITHOCHROME Color Hardener A-53 Arizona Tan, LITHOCHROME Antiquing Release 4388 Russet. 13. VERMONT SLATE Random Interlocking ABC, LITHOCHROME Color Hardener A-59 Beige Cream, LITHOCHROME Antiquing Release A-25 La Crescenta Brown & A-85 Muted Green. 14. NEW BRICK Herringbone, LITHOCHROME Color Hardener A-28 Tile Red, LITHOCHROME Antiquing Release 3611 Oyster White. 15. NATURAL STONE Sculptured Granite, LITHOCHROME Color Hardener 1037 Chalk Blue, LITHOCHROME Antiquing Release 1101 Classic Gray. 16. ROCK SALT Embossing Skin, CHROMIX Admixtures C-12 Mesa Beige, LITHOTEX Liquid Release, LITHOCHROME Chemstain Classic CS-16 Faded Terracotta. 17. ASHLER STONE Embossing Skin, LITHOCHROME Color Hardener 5183 Stone Gray accented with A-51 Steadman Buff, LITHOCHROME Antiquing Release 5921 Walnut & 1101 Classic Gray. 18. MOORISH PAVER Interlocking, LITHOCHROME Color Hardener A-56 Venetian Pink, LITHOCHROME Antiquing Release 1101 Classic Gray. 19. CEDAR PARQUET, LITHOCHROME Color Hardener A-51 Steadman Buff, LITHOCHROME Antiquing Release 5921 Walnut. 20. COBBLESTONE Stacked Bond, LITHOCHROME Color Hardener A-25 La Crescenta Brown accented with A-21 Deep Charcoal, LITHOTEX Liquid Release. 21. LIMESTONE Embossing Skin, LITHOCHROME Color Hardener 3611 Oyster White accented with 5758 Weathered Sage, LITHOCHROME Antiquing Release A-50 Slate Gray. 22. PINE Interlocking Plank ABC, LITHOCHROME Color Hardener A-59 Beige Cream, LITHOCHROME Antiquing Release 3854 Pecan Tan. 23. COBBLESTONE Random Interlocking ABC, LITHOCHROME Color Hardener A-33 Classic Gray accented with A-27 Dark Red, LITHOCHROME Antiquing Release 1503 Deep Charcoal. 24. FRACTURED EARTH Embossing Skin, LITHOCHROME Color Hardener A-55 Pecan Tan accented with A-29 Terra Cotta, LITHOCHROME Antiquing Release 1101 Classic Gray. 25. RIVER STONE Embossing Skin, LITHOCHROME Color Hardener A-59 Beige Cream, LITHOCHROME Antiquing Release 1290 Cordovan Brown. 26. FRACTURED SLATE Herringbone, LITHOCHROME Antiquing Release A-24 Russet and A-21 Deep Charcoal. 27. LONDON SLATE Random Interlocking ABC, CHROMIX Admixtures C-12 Mesa Beige, LITHOCHROME Antiquing Release 1290 Cordovan Brown. 28. COBBLE TILE 6-inch Stacked Bond, LITHOCHROME Color Hardener 0266 Ash White, LITHOCHROME Antiquing Release 4948 Smoke Beige. 29. LIMESTONE European Fan, LITHOCHROME Color Hardener 0266 Ash White accented with A-57 Platinum Gray, LITHOCHROME Antiquing Release 4948 Smoke Beige. 30. ASHLER STONE Random Interlocking ABC, CHROMIX Admixtures C-12 Mesa Beige, LITHOCHROME Antiquing Release 1290 Cordovan Brown. 31. FRACTURED SLATE Random Interlocking ABC, LITHOCHROME Color Hardener A-50 Slate Gray, LITHOCHROME Antiquing Release 1503 Deep Charcoal. 32. ENGLISH YORKSTONE Random Interlocking ABC, LITHOCHROME Color Hardener 0266 Ash White, LITHOCHROME Antiquing Release 4948 Smoke Beige. SCOFIELD® Cureseal-W™ has been used on all samples.



1 800 800 9900 or www.scofield.com

© L. M. Scofield Company 2009 - All rights reserved. CHROMIX, LITHOCHROME, LITHOTEX, SCOFIELD, Color-Conditioned, Cureseal, Pavecrafters, and Texturetop are trademarks of L. M. Scofield Company.



Fractured Earth embossing skin
CHROMIX® ML Admixtures for Color-Conditioned® Concrete – Summer Beige
LITHOCHROME® Antiquing Release – Walnut

MAIN COVER PHOTO:
English Yorkstone Random Interlocking pattern



the leader since 1915

■ L. M. Scofield Company
Headquarters for Western USA and International
6533 Bandini Blvd., Los Angeles, CA USA 90040
voice: 323 720 3000 fax: 323 720 3030

Headquarters for Eastern USA
4155 Scofield Road, Douglasville, GA USA 30134
voice: 770 920 6000 fax: 770 920 6060

Worldwide availability and support

SA-PC-08.2

LITHOTEX® Pavecrafters®



Concrete imprinting tools and embossing skins for authentic textures and realistic patterns





1. Cobblestone-Running Bond



5. Weathered Wood-Interlocking Plank*



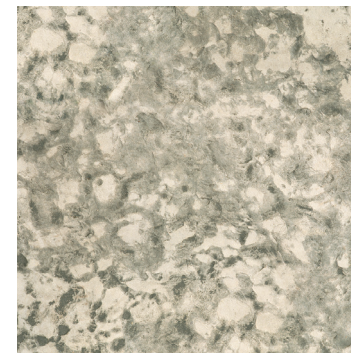
9. Pennsylvania Slate-Single Stone



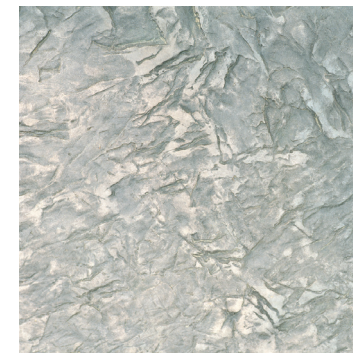
13. Vermont Slate-Random Interlocking



17. Ashler Stone-Embossing Skin*



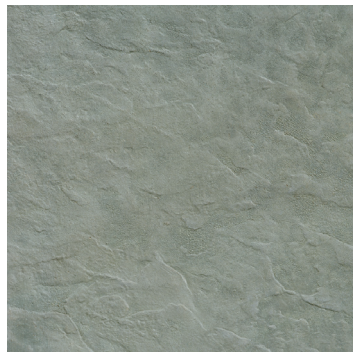
21. Limestone-Embossing Skin*



25. River Stone-Embossing Skin*



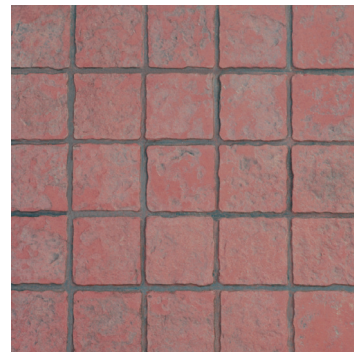
29. Limestone-European Fan



2. Fractured Slate-Embossing Skin*



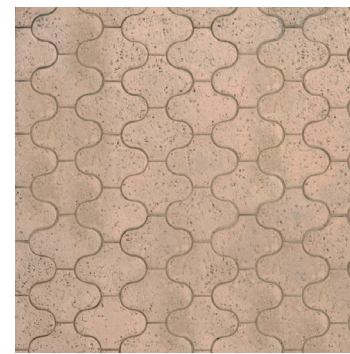
6. Clay Tile-Stacked Bond



10. Stone Tile-Stacked Bond



14. New Brick-Herringbone*



18. Moorish Paver-Interlocking



22. Pine-Interlocking Plank*



26. Fractured Slate-Herringbone



30. Ashler Stone-Random Interlocking



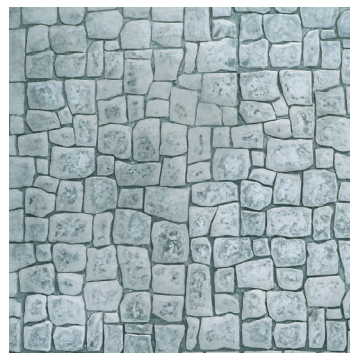
3. Canyon Stone-Random Interlocking



7. Fractured Slate-Rattanweave



11. Old Belgium Stone-Running Bond



15. Natural Stone-Sculptured Granite



19. Cedar-Parquet Tile*



23. Cobblestone-Random Interlocking



27. London Slate-Random Interlocking*



31. Fractured Slate-Random Interlocking*



4. New Brick-Running Bond*



8. Used Brick-Running Bond*



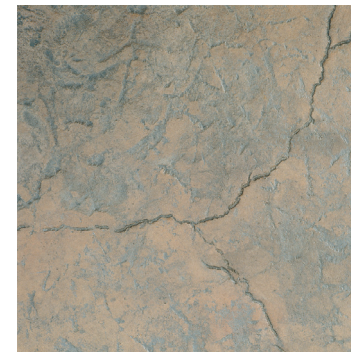
12. Used Brick-Herringbone*



16. Rock Salt-Embossing Skin*



20. Cobblestone-Stacked Bond



24. Fractured Earth-Embossing Skin*



28. Cobble Tile 6-inch-Stacked Bond



32. English Yorkstone-Random Interlocking

Choose from more than 200 distinctive tools from the #1 Ranked Brand Name* in Stamping Tools. Scofield's full professional system includes border tools, floppy tools, filler tools, texturing tools, embossing skins and interlocking pattern-matched tools. Custom made-to-order patterns are also available. View the complete line at www.scofield.com/stamped-concrete.html

*Tools recommended for use with SCOFIELD® Texturetop® Stamp Grade.

A wide variety of appearances can be achieved by using the different Scofield coloring systems, release agents and concrete stains with LITHOTEX® Pavecrafters® imprinting tools and embossing skins.

See back panel for color key to photos.



1 800 800 9900 or www.scofield.com